



SureCast Concrete Color Hardener

SureCast concrete colored hardener is premixed, dry-shake, colored powder concrete hardener used for coloring and hardening freshly placed concrete flat work. Projects completed with SureCast color hardener have a surface that is substantially harder and more wear-resistant than regular concrete. This coloring method can be utilized for concrete applications (salt finishes, broom finishes, rotary finishes, etc.), as well as vertical surfaces and other types of architectural concrete.

COLORS IN STOCK



Almond



Antique White



Gray



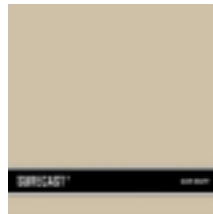
Ivory



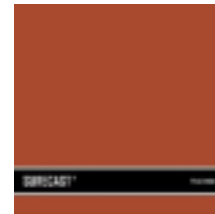
Putty



Smoke



Sun Buff

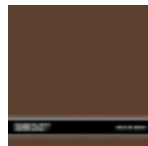


Tile Red

SPECIAL ORDER COLORS AVAILABLE



Blue Fog



Brown Derby



Caribbean Cream



Charcoal



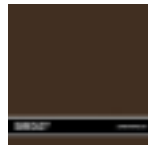
Chocolate



Concrete Gray



Coral



Dark Walnut



Desert Sand



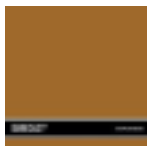
Dove Gray



Green Slate



Limestone



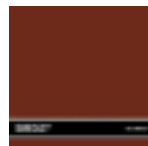
Maplewood



Mint



Natural White



Old Brick



Redwood



Sand Buff



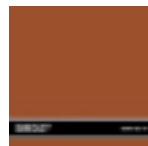
Silver



Spice



Taupe



Terra Cotta